

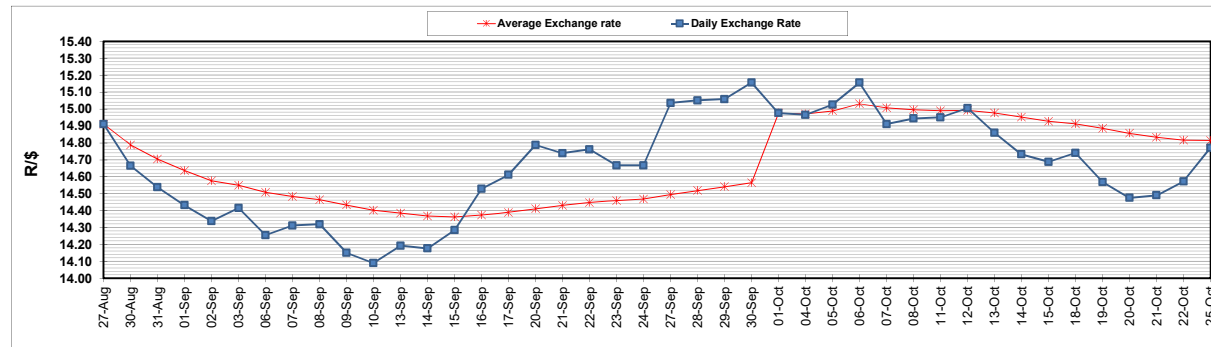
	PETROL 95 ULP	PETROL 93 ULP & LRP	DIESEL 0.05%	DIESEL 0.005%	ILL. PAR.
GAUTENG PUMP PRICE (SA c/l) AS FROM 06/10/2021	1,833.000	1,811.000	-	-	-
WHOLESALE PRICE (SA c/l) AS FROM 06/10/2021	-	-	1,571.780	1,575.180	980.488
SINGLE NATIONAL MAXIMUM RETAIL PRICE	-	-	-	-	1,240.000
BASIC FUEL PRICE - 25/10/2021 (SA c/l)	989.329	967.264	932.188	935.507	926.832
PRESS RELEASE CONTRIBUTION TO BFP 06/10/2021 - 25/10/2021 (SA c/l)	818.310	806.310	771.630	775.030	767.128
UNIT OVER/(UNDER) RECOVERY - 25/10/2021 (SA c/l)	(171.019)	(160.954)	(160.558)	(160.477)	(159.704)
AVERAGE BASIC FUEL PRICE 01/10/2021 - 25/10/2021	930.116	913.119	910.620	914.265	904.320
AVERAGE UNIT OVER/(UNDER) RECOVERY 01/10/2021 - 25/10/2021	(112.018)	(106.491)	(143.402)	(143.646)	(142.839)

### ANALYSIS MOVEMENT OF AVERAGE OVER/(UNDER) RECOVERY

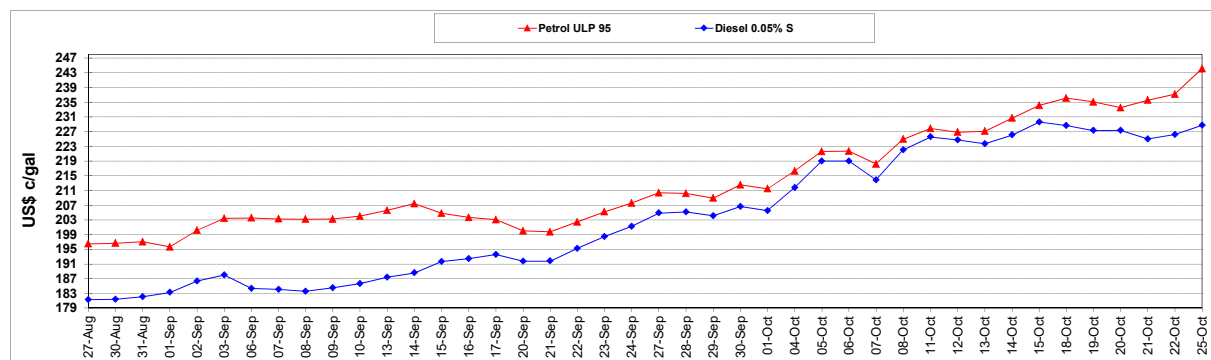
	PETROL 95	PETROL 93	DIESEL 0.05%	DIESEL 0.005%	ILL. PAR.
- MOVEMENT IN INTERNATIONAL PRODUCT PRICES	(96.440)	(91.198)	(128.151)	(128.335)	(127.693)
- MOVEMENT IN EXCHANGE RATE	(15.578)	(15.293)	(15.251)	(15.312)	(15.146)
AVERAGE UNIT OVER/(UNDER) RECOVERY 01/10/2021 - 25/10/2021	(112.018)	(106.491)	(143.402)	(143.646)	(142.839)

### R/\$ EXCHANGE RATE - (R/\$14.7703 - 25/10/2021)

#### EXCHANGE RATE USED IN BASIC FUEL PRICE



#### INTERNATIONAL PRODUCT PRICES OF BASKET USED IN BASIC FUEL PRICE



#### BASIC FUEL PRICE IN SA CENTS PER LITRE

